



Bateman Horne Center

RESEARCH | CLINICAL CARE | EDUCATION

MERC REPORT 2024

ADVANCING KNOWLEDGE,
SHAPING TOMORROW



Medical Education Resource Center





EXECUTIVE SUMMARY

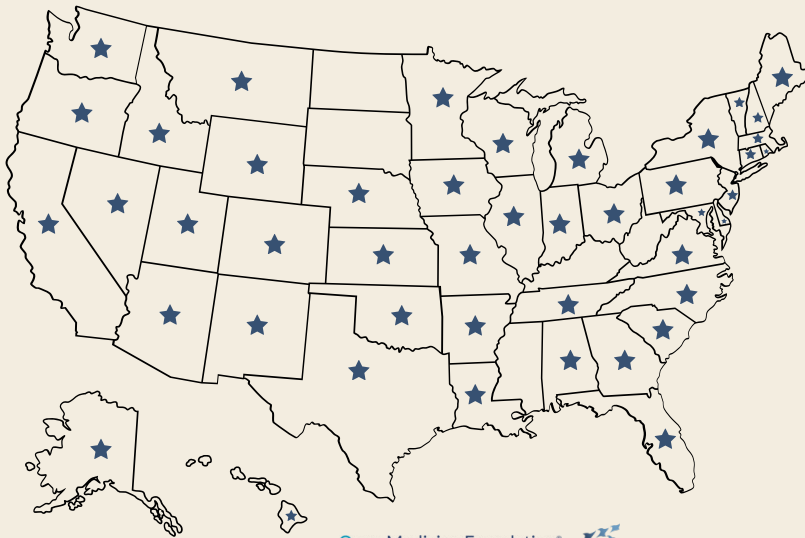
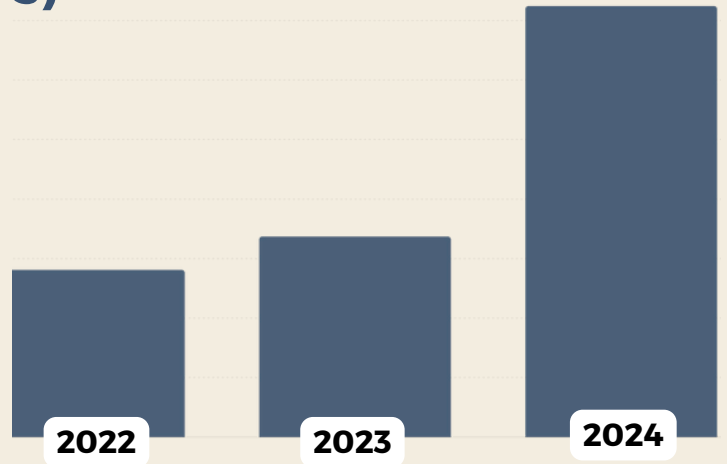
In 2024, the OMF-supported Medical Education Resource Center (MERC) at Bateman Horne Center (BHC) experienced unprecedented growth and impact, solidifying its position as a global leader in ME/CFS and post-COVID education. Through comprehensive, evidence-informed training programs and strong partnerships with leading health organizations, MERC has empowered healthcare professionals across the U.S. and internationally to enhance the diagnosis and treatment of these complex conditions. Our outreach has directly contributed to improved patient care and strengthened the clinical community's understanding of ME/CFS and infection-associated chronic conditions (IACCs).

Growth & Performance

Healthcare Professionals (HCPs) Reached

Total HCPs Reached: **13,424**

- 2022: 2,810 HCPs
- 2023: 3,370 HCPs
- 2024: **7,244 HCPs**



Open Medicine Foundation®
HOPE Leading Research. Delivering Hope.

Bateman Horne Center
RESEARCH | CLINICAL CARE | EDUCATION



46 States
89 Countries



Program Highlights

47 Lectures Delivered

5 Accredited CME

(Continuing Medical Education)

Notable Presentations:

- American Physical Therapy Association (APTA) National Conference
- Centre hospitalier de l'Université de Montréal (CHUM) Canada
- Ehler's Danlos Society (EDS) Foundation of Canada
- Emory University Long COVID ECHO
- International Conference of Clinical & Scientific Advances in ME/CFS and Long COVID (Lisbon)
- Israeli Ministry of Health
- Mayo Clinic (Rehabilitation Professionals)
- NIH RECOVER (Neuro & all of RECOVER)
- Post-COVID Primary Care ECHO
- Schmidt Global Initiative ECHO
- University of Rochester Medical Center Grand Rounds (Internal Medicine & Neurology)
- University of Utah Family Medicine Department Grand Rounds
- Unite2Fight (Global Conference)

2024 Training

- Observership: Physical Medicine & Rehabilitation Physician
- Internship: Occupational Therapist, Nova Southeastern University
- Medical Student: Master's Student, University of Utah Health

29 Disciplines Reached

Behavioral Health
Cardiology
Dermatology
Emergency Medicine
Endocrinology
Epidemiology
Family Medicine
Gastroenterology

Genetics
Gerontology
Infectious Disease
Internal Medicine
Microbiology
Naturopathic Medicine
Neurology
Neuropsychiatry

Obstetrics/Gynecology
Occupational Therapy
Pain Medicine
Pediatrics
Pharmacology
Physical Therapy
Public Health
Psychiatry

Pulmonology
Rheumatology
Speech Therapy
Urology
Virology



Program Highlights

“At last! A program where I can put what I learn into practice with my patients!”

Noteworthy Educational Partners/Collaborators:

- CDC
- Dartmouth Hitchcock Medical Center
- Duke University
- Emory University
- EDS Foundation Canada
- Emerge Australia
- Federation of State Medical Boards (FSMB)
- ICanCME (Canada)
- John's Hopkins
- Mayo Clinic
- MIT
- NIH RECOVER
- Nova Southeastern University
- Project ECHO
- Stanford University
- University of North Carolina
- University of Rochester Medical Center
- University of Utah Health
- Washington University



Bateman Horne Center
RESEARCH | CLINICAL CARE | EDUCATION

Long COVID & Post-Infectious Syndrome ECHO

2023-2024 Series:

- 11 sessions
- Program attendees: **621**
- Total recording views: **18,286**

2022 Series:

- 15 sessions
- Program attendees: **717**
- Total recording views: **95,155**

MERC Participation in 2024 ECHO Programs

- Emory University Neuropsychology of Long COVID ECHO
- Post-COVID Primary Care ECHO
- Long COVID & Fatiguing Illness Recovery Program ECHO
- Schmidt Global Initiative
- University of Utah Health Pediatric ECHO

The MERC program covers all aspects of managing patients with infection-associated chronic conditions (IACCs)

2024 Lectures

- Dysautonomia: Who's in the driver's seat?
- When Exercise Doesn't Help
- Long COVID: Pediatric & Young Adult Population
- Anatomical Neurological Complications (tethered cord, CCI, AAI)
- Sympathetic Overdrive
- Navigating Mental Health Considerations in ME/CFS, PASC & Dysautonomia
- Post-Exertional Malaise (PEM): The Price of Exertion
- Clinical Pearls: Assessment & Management of ME/CFS and Long COVID
- Treating Key Symptoms & Comorbidities
- Low-Dose Naltrexone
- Integrative Clinical Management of hEDS and its Common Comorbidities
- Long COVID & Infection-Associated Chronic Conditions



Dissemination

Platforms Housing Accredited Education

VuMedi

- 49,117 impressions
- 1,696 page views
- 926 unique page viewers
- 305.5 hours of watch time

Medscape

- **Continuing Medical Education (CME)**
 - ME/CFS Diagnosis & Management in the age of COVID-19: Experts Insights
- **Publication, December 2024 featuring Dr. Yellman**
 - Post-Exertional Malaise in Fatiguing Diseases: What to Know to Avoid Harmful Exercise

Michigan State Medical Society

Continuing Medical Education (CME)

- Long COVID & Post-Viral Syndromes
- Grand Rounds: Post-Exertional Malaise (PEM)
- Update on Clinical Diagnostic Criteria for ME/CFS
- Uniting Compassion, Attention, and Innovation to treat ME/CFS

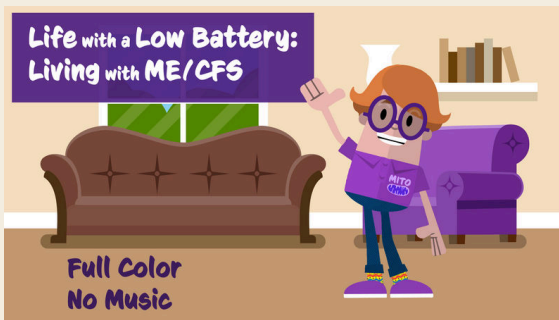
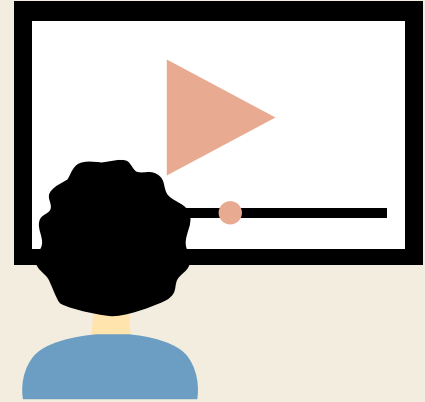
University of Rochester Medical Center

Continuing Medical Education (CME)

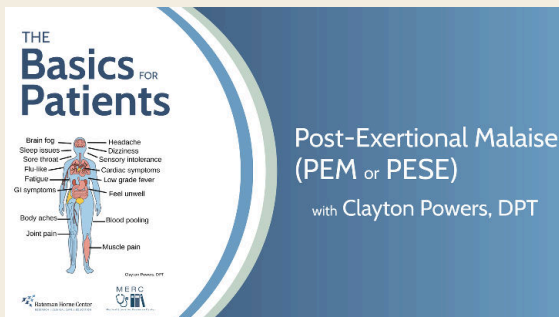
- Managing Long COVID & Infection-Associated Chronic Conditions
 - Department of Neurology
 - Department of Internal Medicine

YouTube

- ✓ 192,216 views
- ✓ 17,438 hours of watch time
- ✓ 50 countries reached
- ✓ 7 patient/caregiver geared educational videos
- ✓ 113,441 combined ECHO videos views



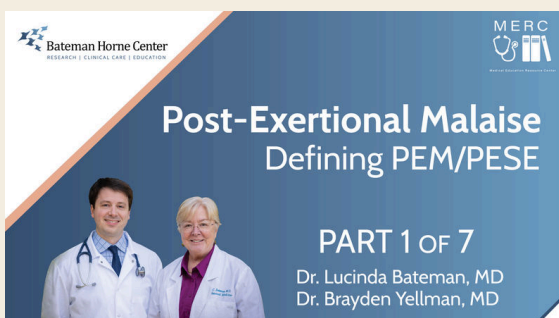
**Life with a Low Battery:
Living with ME/CFS**
22,062 views in 75 days!



The Basics Series:

- Post-Exertional Malaise (Jun 2024)
- Orthostatic Intolerance (April 2024)
- Diagnosing ME/CFS (Nov 2024)
- PEM & Pacing (May 2024)

19,548 combined views



PEM Video Series (July 2023)
55,028 views

Reach & Impact



FACEBOOK

- Reach: 557.7k (25.7% increase)
- Followers: 1.2k (31.1% increase)
- Link clicks: 37.1k (61.5% increase)



INSTAGRAM

- Reach: 87k (4.8% decrease)
- Followers: 1.1k
- Link clicks: 3.5k (1.4% increase)



TWITTER / X

- 6,639 followers
- 20% increase



LINKEDIN

- 1,036 page views
- 495 unique visitors
- 320 new followers
- 31,843 impressions
- 56 reposts

WEBSITE

- **Visitors**
 - 171 countries
 - 108k new users
- **Most visited pages**
 - ME/CFS Crash Survival Guidebook - 36,057 visits
 - Over 150k downloads!
 - Patient Education - 22,924 visits
 - Healthcare Professionals - 14,395 visits

